

In Vitro Bioactivity and MG63 Cytocompatibility of Chitosan-Silicate Hybrids

Yuki Shirosaki^{1,*}, Tomoyuki Okayama², Kanji Tsuru³, Satoshi Hayakawa², Akiyoshi Osaka²

¹Frontier Research Academy for Young Researchers, Hibikino, Wakamatsu-ku, Kitakyushu, 8080196, Japan

²Graduate School of Natural Science and Technology, Okayama University, Tsushima, Kita-ku, Okayama, 7008530, Japan

³Faculty of Dental Science, Kyushu University, Maidashi, Higashi-ku, Fukuoka, 8128582, Japan

Abstract This paper describes *in vitro* bioactivity and cytocompatibility of chitosan-silicate hybrids derived from chitosan and γ -glycidoxypropyltrimethoxysilane (GPTMS) through sol-gel processing. Chitosan, one of the biodegradable polymers, was selected as a hybrid matrix whereas GPTMS was employed as crosslinking agent as well as bioactive inorganic species. GPTMS was hydrolyzed completely in acetic-acid solution to yield Si-OH groups, which in turn were condensed to form Si-O-Si networks. Cytotoxicity of GPTMS monomer was much lower than that of glutaraldehyde. From MG63 osteoblastic cell culture, the chitosan-GPTMS hybrids were cytocompatible better than the hybrids crosslinked with glutaraldehyde, tetraethoxysilane or glycidylmethacrylate. The hybrids incorporated with Ca ions deposited apatite on their surface under a simulated body fluid (SBF, Kokubo solution). Freeze-drying lead to porous hybrids with about 90% in porosity and about 100 μ m in size. When soaked in SBF, the porous deposited apatite not only on the outer surface but also on the pore wall. The porous hybrids hence are considered to be appropriate materials for scaffolds.

Keywords Chitosan, γ -glycidoxypropyltrimethoxysilane (GPTMS), Organic-Inorganic Hybrid, Scaffold, Cytocompatibility, Apatite, Simulated Body Fluid

1. Introduction

The success of tissue engineering primarily depends on the scaffolds that serve to support and reinforce the regenerating tissue. The scaffolds should not only promote cell adhesion, cell proliferation, and cell differentiation, but also should be biocompatible, biodegradable, and highly porous[1]. Chitosan consists of polysaccharide chains, and is one of the candidate materials for scaffolds since they are bioresorbable as well as biocompatible, non-antigenic and non-toxic[2]. Yet their inferiority in mechanical properties and too high *in vivo* biodegradability are disadvantageous for most medical applications. Hence, mechanical strength, and biodegradation are to be controlled within proper allowance or an acceptable range before chitosan is employed for scaffolds. For such purposes, cross-linking the polysaccharide chains with a non-toxic agent to form a networked is essential. Various cross-linking agents have been attempted such as epoxy compounds and aldehydes[3, 4], whereas they are all highly cytotoxic and may spoil the biocompatibility of chitosan. Shirosaki *et al.*[5] have already pointed out that γ -glycidoxypropyltrimethoxysilane (GPTMS) is a good

cross-linking agent for chitosan, and that the chitosan-GPTMS hybrids are far better than chitosan in cytocompatibility with human osteosarcoma cell MG63. Moreover, they might induce apatite nucleation and growth under the body environment or in a simulated body fluid (Kokubo solution,) since they involve inorganic species (silanol groups, Ca^{2+}) that are considered essential for inducing the apatite nucleation[6]. Such ability of spontaneous apatite deposition is often denoted as bioactivity. If they are bioactive, they might be fixed in tissue defects with forming direct bonds. That is, they are employable as scaffolds, tissue substitutes, or filler for tissue defects. In this study, we examined *in vitro* bioactivity and cytocompatibility of chitosan-GPTMS hybrids as well as the structure of their hybrids. Moreover, freeze-drying technique is used to prepare porous chitosan-GPTMS hybrids and their applicability to tissue engineering scaffolds is explored.

2. Materials and Methods

2.1. Preparation of the Hybrids

An appropriate amount of chitosan (high molecular weight, deacetylation: 79.0%, Aldrich®, USA) was dissolved in 0.25M acetic acid aqueous solution to attain a concentration of 2% (w/v), to which γ -glycidoxypropyltrimethoxysilane (GPTMS; Chisso, Tokyo, Japan, $\text{CH}_2\text{OCHCH}_2\text{OCH}_2\text{CH}_2\text{Si}$

* Corresponding author:

yukis@lsse.kyutech.ac.jp (Yuki Shirosaki)

Published online at <http://journal.sapub.org/ijmc>

Copyright © 2013 Scientific & Academic Publishing. All Rights Reserved

(OCH₃)₃) and calcium chloride (CaCl₂, Nacalai Tesque, Kyoto, Japan) were added so that the solutions with compositions in Table 1 were obtained. Here, 1 mole chitosan stands for 1 mole deacetylated amino groups of their unit. Table 1 also listed the samples codes. Tetraethoxysilane (TEOS), glutaraldehyde (GA), and glycidylmethacrylate (GMA) were used as another crosslinking reagents for comparison. After stirring at room temperature for 1h, the resultant solutions were poured into polypropylene containers. The resultant solutions were aged in the shielded polypropylene containers at 60°C for 2 days. Then, the gel-like hybrids were dried at 60°C for 2 days to yield hybrid membranes. The obtained membranes were soaked in 0.25N sodium hydroxide to neutralize and wash out the remaining acetic acid, and rinsed well with distilled water. In addition, freeze-drying was used to derive porous hybrids: A fraction of each resultant sol was poured into a polystyrene container, and frozen at -20°C for 24h in the refrigerator before vacuum drying.

Table 1. Starting composition of the hybrids (molar ratio)

Sample	Chitosan	GPTMS	CaCl ₂	GA	TEOS	GMA
Ch	1.0					
ChCa05	1.0		0.5			
ChG10	1.0	1.0				
ChG10Ca005	1.0	1.0	0.05			
ChG10Ca01	1.0	1.0	0.1			
ChG10Ca025	1.0	1.0	0.25			
ChG10Ca05	1.0	1.0	0.5			
ChGA05	1.0			0.5		
ChT10	1.0				1.0	
ChGMA10	1.0					1.0

2.2. Structural Characterization of the Hybrids

Fourier-transform infrared (FT-IR) spectra were measured with a FT-IR spectrometer (Nexus470, Thermo Nicolet) using the KBr method, where the signals from 128 scans were accumulated with a resolution of 4 cm⁻¹. The pore diameter was evaluated with the optical microscope images. Outlines of the pore were traced and the maximum diameter was derived using Image-Pro Plus software (Plantron, Tokyo, Japan). In each procedure, at least twenty pores were picked up from three different areas of a sample. The density of the scaffolds was derived from the weight and geometric volume.

2.3. Cell Culture

2.3.1. Cytotoxicity of the Cross-linking Agents

On degradation under the body environment, the hybrids may release several fragments into plasma. Since, chitosan fragments have been proved non-toxic. It should be the first thing to examine cytotoxicity of debris from cross-linking reagents: it was evaluated *in vitro* using osteoblastic cells MG63 cells (DAINIPPON PHARMACEUTICAL Co., LTD, Japan). MG63 cells were seeded in 96-well plates at 6400 cells per well (2x10⁴ cells·cm⁻²) in 250 µl D-MEM with 10% FBS, 1 % penicillin and streptomycin solution and 2.5 µgml⁻¹

fungizone and supplemented with 50 µgml⁻¹ ascorbic acid, 1% MEM-non essential amino acids and 2.0 mMml⁻¹ L-glutamine. GA and GPTMS were added to the culturing media up to 100 ppm and 1000 ppm, respectively. The cell culture system was maintained in a humidified incubator at 36.5°C with 5% CO₂ in air. After 24h of culture, surviving cell numbers were determined indirectly by MTT assay. MTT₅₀ represents the concentration of each cross-linking agent where the absorbance were half that of the cells without agent.

2.3.2. Cytocompatibility of the Solid Membrane

The solid membranes were soaked in PBS (pH7.4) solution and sterilized by autoclaving at 121°C for 20 min. MG63 cells were cultured (10⁴ cells·cm⁻²) under control conditions (absence of materials, standard plastic culture plates) and on the surface of the solid membranes. The cultures were evaluated throughout the incubation time at days 1,3, 5, and 7 for cell viability and observed by scanning electron microscopy (SEM). The cell viability was determined by MTT assay.

2.4. Evaluation of *in Vitro* Apatite Formation

SBF was prepared as described in the literatures[6]. It has been proved that *in vivo* apatite formation on bioactive implants is almost fully reproduced under *in vitro* experiments in SBF. The solid membranes (30x10x1mm²) and porous scaffolds were soaked in 30 ml SBF held in capped polystyrene bottles at 36.5°C up to 14 days as pH was monitored. Then, they were gently rinsed with distilled water and dried at room temperature. Their surfaces were characterized using an X-ray diffractometer with a thin-film measuring attachment (TF-XRD): RAD-II AX, CuKα, (Rigaku, Tokyo, Japan), operated at 40kV-20mA acceleration. The surface morphology was observed under a scanning electron microscope (SEM: JEOL, JMSM-6300, Tokyo, Japan) equipped with an energy-dispersion X-ray (EDX) analyzer (model DX-4, Phillips). The concentrations of the component elements released into SBF were measured by inductively coupled plasma emission spectroscopy (ICP; ICPS-7500, Shimadzu, Japan).

3. Results and Discussion

3.1. The Solid Membrane

Fig. 1 shows the FT-IR absorption spectra of the specimens. The bands at 1650, 1565, and 1110-1000 cm⁻¹ were assigned to the constituent bonds of chitosan and GPTMS[5]. Growth of a component (Si-O) in the band at 1100-1000 cm⁻¹ confirmed the formation of Si-O-Si bridging bonds on hybridization[5]. Difference in IR profile was detected between ChG10Ca05 and ChG10 in the peaks assigned to the amino groups. This should be attributed to the presence of Ca(II) in the system, suggesting that the chemical environment around the amino groups is different among the

solid membranes with an without Ca(II). Nishi *et al.*[7] suggested the presence of good interactions between the amino groups of chitosan and Ca^{2+} to form complexes. Thus,

though no more define data are available at this moment, one might suppose the presence of any calcium-amino group interactions.

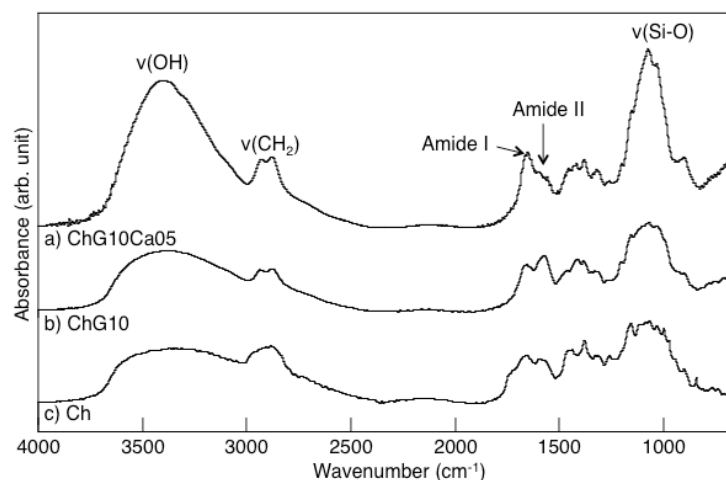


Figure 1. FT-IR absorption spectra of (a) ChG10Ca05, (b) ChG10, and (c) Ch

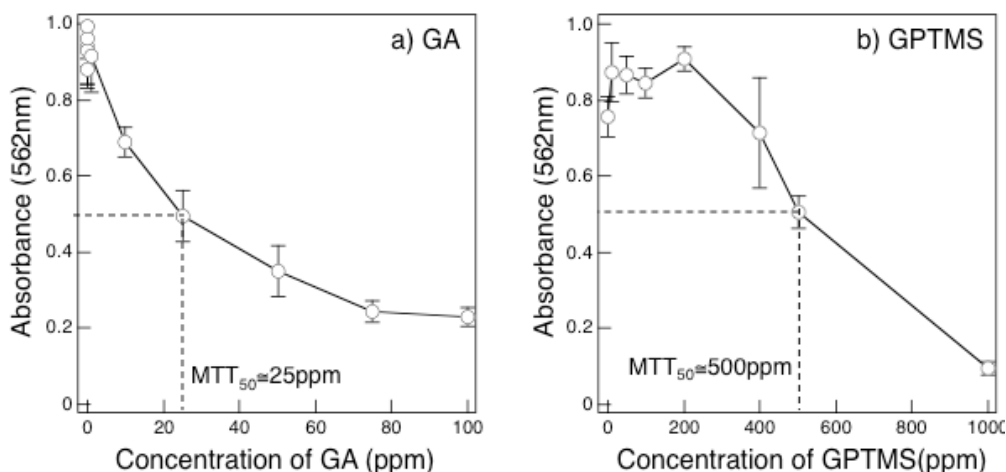


Figure 2. MTT assay for MG63 cells cultured in the media added with GA (a) and GPTMS (b): ~25 and ~500 ppm for MTT_{50} , respectively. See text for MTT_{50}

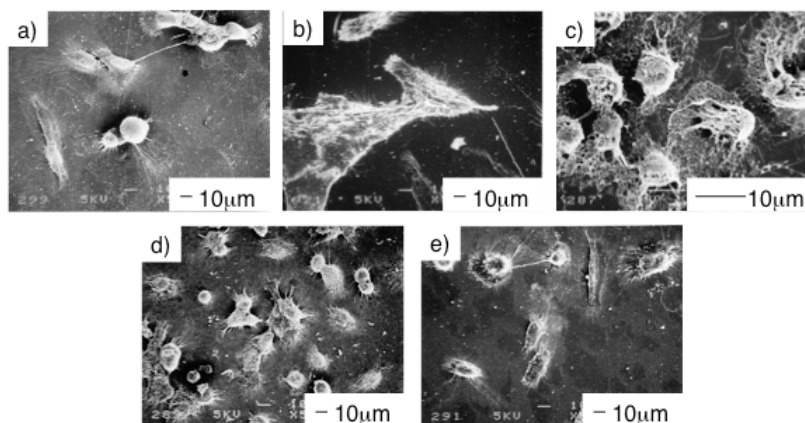


Figure 3. Morphology of MG63 cells cultured for 1 day on the solid membranes (a) Ch without cross-linking agent, and cross-linked with (b) GPTMS(ChG10), (c) GA(ChGA05), (d) GMA(ChGMA10), and (e) TEOS(ChT10), respectively

The MTT assay results for MG63 were presented in Fig. 2 as a function of the GA and GPTMS concentration in the culturing media, together with MTT₅₀. The MTT assay in Fig. 2(a) indicated that the cell viability decreased rapidly with GA, approaching to 25 ppm in MTT₅₀. In contrast, Fig 2(b) showed the cell viability remained up to ~200 ppm as high as that for the media without GPTMS, then it gradually decreased to give 500 ppm in MTT₅₀. Therefore, it is concluded that GPTMS monomer was about 20 times less cytotoxic than GA. Fig. 3 shows morphology of MG63 cells cultured for 1 day on the solid membranes cross-linked with (b) GPTMS (ChG10), (c) GA (ChGA05), (d) GMA (ChGMA10), and (e) TEOS (ChT10), respectively. Few cells were adhered on (a) Ch, (b) ChG10, and (e) ChT10, were some on (a) and (e) were spherical but those on ChG10 had many pseudopodia and spread out. In contrast, the cells on (b) ChGA05 found burst indicating that the cells were dead. Here, the cytotoxicity of GA was also confirmed. MTT

assay results in Fig. 4 presented above tendency for the MG63 cells cultured on the solid membranes (a) through (e). The cells grew far better on (b) ChG10 and (e) ChT10 than on any other membranes. In particular, ChG10 and ChT10 showed similar effects, while at 7 days ChG10 exceeded ChT10. Cultures (a) Ch and (d) ChGMA10 gave mostly similar results throughout the culture period. It would not be surprising that the cells on (c) ChGA05 became extinct completely. The greatest viability of the cells for (b) ChG10 was in excellent accordance with Fig. 5 that showed the morphology of MG63 cells cultured for 7 days on ChG10 (Fig. 4(b)) and ChT10 (Fig. 4(e)). That is, the cells covered completely the surface of ChG10, reaching a confluent stage, but ChT10 showed much inferior coverage by the cells. From those results, it was concluded that GPTMS is the best cross-linking agent over GMA and TEOS, while GA is the worst.

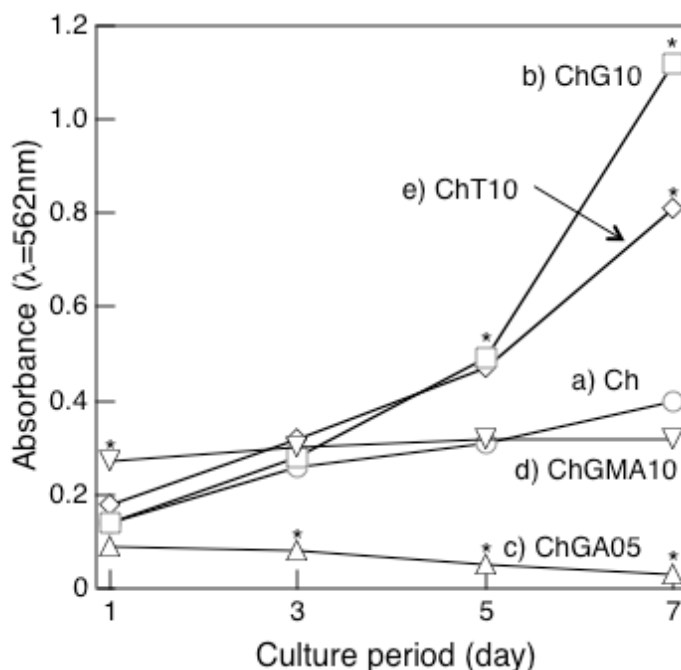


Figure 4. Cell proliferation (MTT assay) of MG63 cells cultured on the solid membranes (a) Ch without cross-linking agent, and cross-linked with (b) GPTMS(ChG10), (c) GA(ChGA05), (d) GMA(ChGMA10), and (e) TEOS(ChT10), respectively

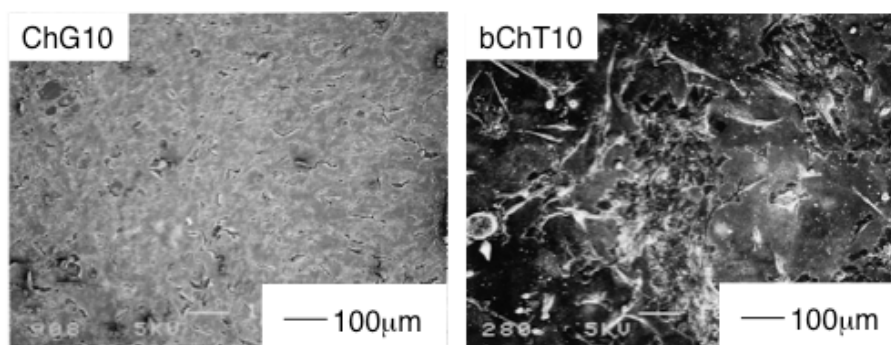


Figure 5. Morphology of MG63 cells cultured for 7d on ChG10 (left) and ChT10 (right)

Fig. 6(a) thorough (g) shows TF-XRD patterns for the solid membranes after soaked in SBF up to 14 days. The diffractions for the as-prepared membranes were denoted as "0d". Apatite did not deposit on (a) Ch, (b) ChCA05, or (c) ChG10 within 14 days but on the other four ChG10 samples that involved Ca^{2+} ions. The calcium content shortened the induction period, such as ~14d, ~7d, ~7d, and 3d for (d) ChG10Ca005, (e) ChG10Ca01, (f) ChG10Ca025, and (g) ChG10Ca05, respectively. Fig. 7(a) through (d) shows SEM images of the surface microstructure of the solid

membranes after soaked in SBF for 14 days. An EDX analysis indicate that the deposits on Ch: 14d and ChCa05: 14d involved Ca and Cl whole Si was detected for those on ChG10: 14d. The spherical deposits densely covering the surface of the ChG10Ca05 membranes were apatite according to Fig. 6. The ability of apatite formation was enhanced as the amount of CaCl_2 increased. Such correlation between Ca(II) and apatite formation agree well with the apatite deposition tendency observed for bioactive silicate glasses and glass ceramics[8-10].

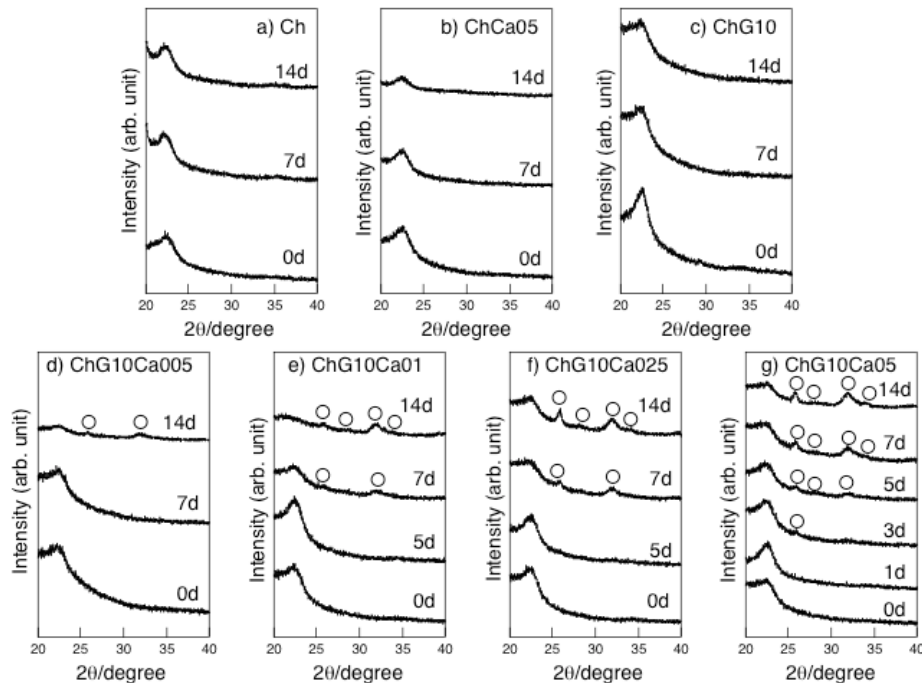


Figure 6. TF-XRD patterns for the hybrid membranes before and after being soaked in SBF up to 14 days. (a) Ch, (b) ChCa05, (c) ChG10, (d) ChG10Ca005, (e) ChG10Ca01, (f) ChG10Ca025, and (g) ChG10Ca05. ○:apatite

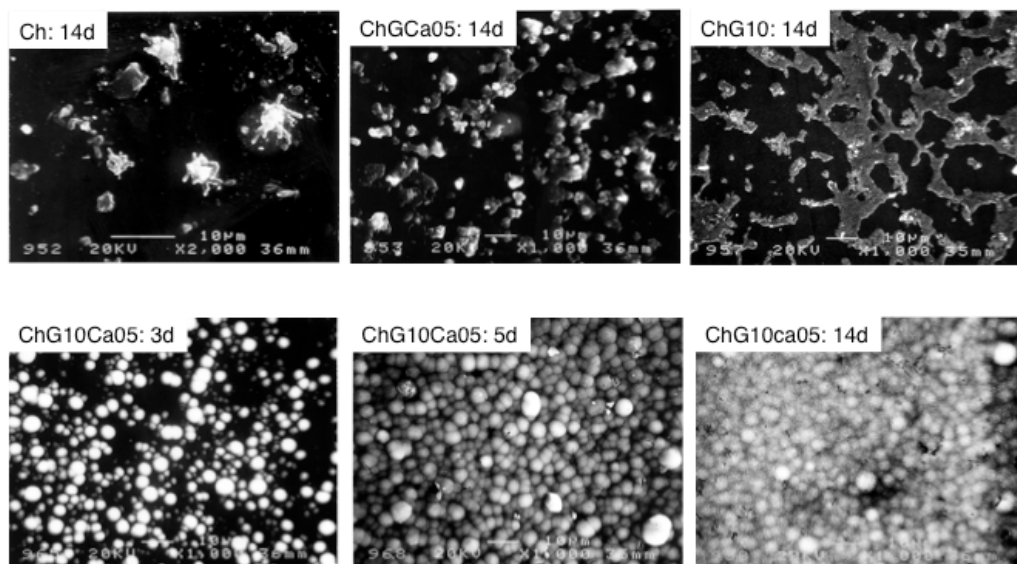


Figure 7. SEM images of the surface microstructure of the solid membranes. Top row: Ch, ChCa05, and ChG10 soaked in SBF for 14d. Bottom row: ChG10Ca05 soaked in SBF for 3 to 14d. Bar : 10 μm

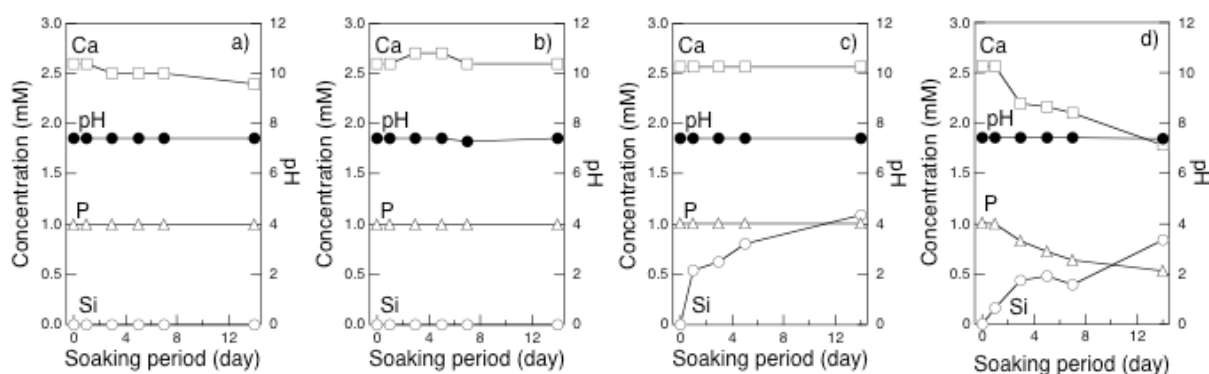


Figure 8. The concentration of Ca(II), P(V), and Si(IV) and pH of SBF after soaking selected solid membranes: (a) Ch, (b) ChCa05, (c) ChG10, (d) ChG10Ca05

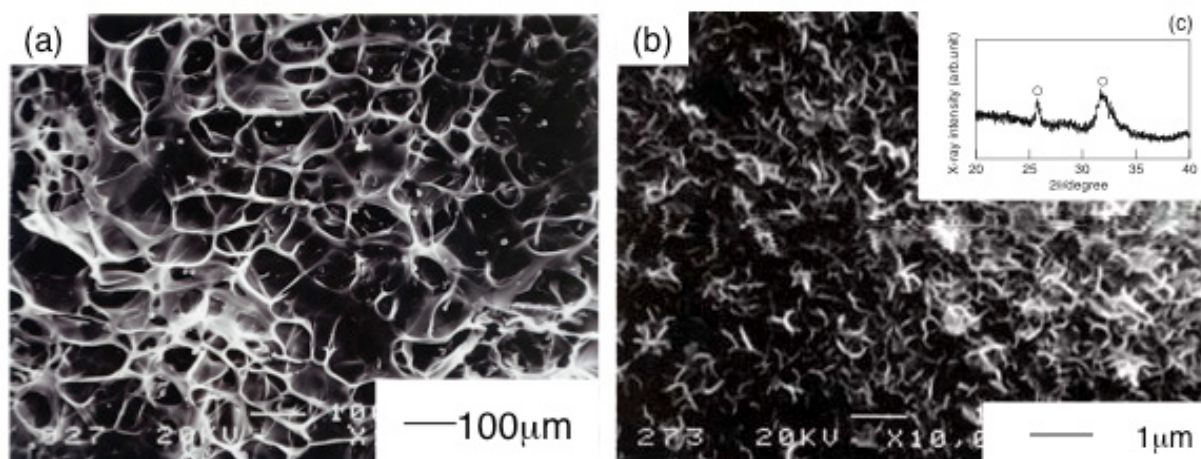


Figure 9. SEM images of the as-prepared porous scaffold ChG10Ca05 (a), and (b) the scaffold after soaked in SBF for 7d. The XRD profile of insert (c) indicates the flakes of (b) are apatite crystallites

Fig. 8 demonstrates the concentration of Si(IV), Ca(II), and P(V) and pH of SBF after soaking selected membrane samples: Ch, ChCa05, ChG10, and ChG10Ca05. The profiles for ChG10Ca01 and ChG10Ca025 were very similar to those of ChG10Ca05. SBF was well buffered and pH was kept constant when the solid membranes were soaked up to 14d. The slight decrease in Ca(II) for Ch was explained in terms of adsorption of calcium ions on chitosan, forming complexes with the amino groups[7]. A hump in Ca(II) concentration for ChCa05 during 3 and 5d was due to the Ca(II) release into SBF. The decrease in the concentration of Ca(II) in accordance with the decrease in that of P(V) suggested formation of some calcium phosphates, though no distinct X-ray diffraction signals of calcium phosphates were detected for ChCa05. The release of Si(IV) was detected for all membranes that contained GPTMS. Although no change in the concentration of Ca(II) and P(V) was observed for ChG10, the synchronized decrease in both species for ChG10Ca05 was indicative of calcium phosphate deposition as the XRD profiles showed the formation of apatite in Fig. 6. The FT-IR spectra in Fig. 1 indicated the formation of

Si-O-Si bonds, which might be hydrolyzed to yield Si-OH when the solid membranes were soaked in SBF. Therefore, the same mechanism of apatite deposition attributed to bioactive silicate glass and glass ceramics was suggested to be applicable to the present membranes of ChG10Ca series. That is, the mechanism depended on the release of Ca(II) and the presence of Si-OH groups as the key factors[10, 11].

3.1. The Porous Scaffolds

Fig. 9(a) shows a SEM image of a porous hybrid, ChG10Ca05, as a typical porous microstructure of the chitosan-hybrid scaffolds obtained in the present study due to freeze-drying. The pore size and porosity of the scaffolds was approximately 100 μm and about 90%, respectively. Moreover, the pores were interconnected with windows of walls open to adjacent pores $\sim 50 \mu\text{m}$, large enough for supply oxygen and nourishment. Those pores were within the range to promote effective ingrowth of bone tissue and to provide mechanical interlock for firm initial fixation, proposed by Helebert *et al.*[12] and de Groot[13]. When soaked in SBF for 7d, the porous ChG10Ca05 scaffolds

deposited apatite not only the outer surface but also on the pore walls. The inserted XRD profile confirmed that the flaky deposits were apatite. This concludes that the present porous scaffolds have good bioactivity as they maintained the original porous configuration and flexibility. Therefore, the porous scaffolds are promisingly applicable to bone tissue engineering scaffolds.

5. Conclusions

The toxicity of GPTMS monomer was much lower than that of GA. MG63 osteoblastic cell cultured on chitosan-GPTMS solid membranes showed good cytocompatibility compared with the hybrids crosslinked by other reagents such as GA. Ability of the apatite deposition on the solid membranes was accelerated not only the release of Ca ions from the hybrids but also that of Si ions. Porous hybrids were easily prepared by freeze-drying technique and deposited apatite even the walls of the inside pores under the simulated body fluid. Therefore, it has been concluded that the chitosan-GPTMS porous hybrids are promising candidates of basic materials from which tissue engineering scaffolds are to be derived.

REFERENCES

- [1] T. Tateishi, G.Chen, T. Ushida, *Biodegradable porous scaffolds for tissue engineering*. Journal of Artificial Organs, 5[2], 77-8, 2002.
- [2] T. Chandy, C. P. Sharma, *Chitosan-as a biomaterial*., Biomaterials Artificial Cells and Artificial Organs, 18[1], 1-24, 1990.
- [3] S. R Jameela, A. Jayakrishnan, *Glutaraldehyde crosslinked chitosan as a long acting biodegradable drug delivery vehicle: studies on the in vitro release of mitoxantrone and in vivo degradation of microspheres in rat muscle*, Biomaterials, 16[10], 769-775, 1995
- [4] D. P. Speer, M. Chvapil, C. D. Eskelson, J. Ulreich, *Biological effects of residual glutaraldehyde in glutaraldehyde -tanned collagen biomaterials*, Journal of Biomedical Materials Research, 14[6], 753-764, 1980
- [5] Y. Shirosaki, K.Tsuru, S. Hayakawa, A. Osaka, M. A. Lopes, J. D. Santos, M. H. Fernandes, *In vitro cytocompatibility of MG63 cells on chitosan-organosiloxane hybrid membranes*, Biomaterials, 26[5], 485-493, 2005
- [6] T. Kokubo, H. Kushitani, S Sakka, T. Kitsugi, Y. Yamamuro, *Solution able to reproduce in vitro surface-structure changes in bioactive glass-ceramics A-W.*, Journal of Biomedical Materials Research, 24[6], 721-734, 1990.
- [7] N. Nishi, Y.Maekita, S. Nishimura, O. Hasegawa, S. Tokura, *Highly phosphorylated derivatives of chitin, partially deacetylated chitin and chitosan as new functional polymers - metal – binding property of the insolubilized materials*, International Journal of Biological Macromolecules, 9[2], 109-114, 1987.
- [8] M. Ogino, F. Ohuchi, L. L. Hench, *Compositional dependence of the formation of calcium-phosphate films on Bioglass*, Journal of Biomedical Materials Research, 14[1], 55-64, 1980
- [9] T. Kokubo, S.Ito, Z. T. Huang, T. Hayashi, S. Sakka, T. Kitsugi, T. Yamamuro, *Ca, P-rich layer formed on high-strength bioactive glass-ceramic A-W*, Journal of Biomedical Materials Research, 24[3], 331-343, 1990
- [10] C. Ohtsuki, T. Kokubo, T. Yamamuro, *Mechanism of apatite formation on CaO-SiO₂-P₂O₅ glasses in a simulated body fluid*, Journal of Non-Crystalline Solids, 143[1], 84-92, 1992.
- [11] P.Li, C. Ohtsuki, T. Kokubo, K. Nakanishi, N. Soga, T. Nakamura, T. Yamamuro, *Apatite formation induced by silica gel in a simulated body fluid*, Journal of the American Ceramic Society, 75[8], 2094-2097, 1992
- [12] S. F. Hulbert, S. J. Morrison, J. J.Klawitter, *Tissue reaction to three ceramics of porous and non-porous structures*, Journal of Biomedical Materials Research, 6[5], 347-74, 1972
- [13] K. de Groot, *Bioceramics consisting of calcium phosphate salts*, Biomaterials, 1[1], 47-50, 1980.